

# Wyomissing Area School District Data Overview



Dr. Melissa Woodard



# Dual Enrollment Update

2023-2024 JSHS Program of Studies Addendum

# Dual Enrollment Background

- Dual enrollment, referred to as “concurrent enrollment” in the PA Department of Education School Code, offers college-bound students increased academic rigor while they fulfill their high school requirements and earn college credits.
- Referred to as “Early Admission” when courses are held on college campus
- Wyomissing Area School District has established partnerships with the following local institutions:
  - Reading Area Community College
  - Albright College
  - Alvernia University
- Partnerships provide opportunities for students to earn the college credits at a reduced tuition rate



# Early Admission Participation – 2022 - 2023

- Early Admission with RACC
  - 1 Student enrolled in fall semester + spring semester
  - 1 Additional student enrolled in spring semester
- Early Admission with Albright College
  - 2 students enrolled for the school year



# Approved Dual Enrollment Courses 2022 -2023 - RACC

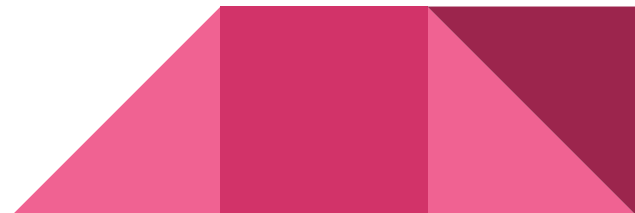
RACC COURSE	TEACHER	HS COURSE
CHE 150 and CHE 155	Chris Grasso	AP CHEMISTRY
MAT 210	Meghan Tierney	AP STATISTICS
PHY 240	Chris Nugent	AP Physics I
ENG 125	Joelle Lamboley	AP Literature and Composition
HIS 145	BJ Dramby	AP WORLD HISTORY

# Approved Dual Enrollment Courses 2023 – 2024 - Alvernia

- Introduction to the Teaching Profession – ED 110
  - The purpose of this course is to provide prospective teachers with an introductory overview of the historical, philosophical, social, and cultural foundations of early childhood education. Topics covered will include becoming a professional, curriculum models and approaches, and assessment and instructional practices for young children birth through age 8. This course meets the Writing Enhanced graduation requirement.

## Future Course Development and Offerings

- Foundations of Special Education – SPE 110
- Human Development and Learning – ED 204



# Partnership with Alvernia University

- Wyomissing Area School District educators will receive support from Alvernia University faculty in the form of a year-long mentorship
  - Course syllabus
  - Course assignments and grading rubrics
  - Helps to ensure consistency with curriculum implementation
- Alvernia will support the development of Future Educator Club




# Partnership with Albright College

- WASD students will continue to have the ability to enroll in Albright courses that are held on the college campus in conjunction with Total Experience Learning (TExpL)
- TExpL affords the opportunity for students to engage in research at the Rockland Lab






# Dual Enrollment Summary

- Wyomissing Area Junior Senior High School will add a minimum of six (6) Dual Enrollment courses to the 2023-24 Program of Studies
    - These courses will be held on the Wyomissing JSHS campus
    - Additionally, Dual Enrollment courses will be available on the Albright College campus and at RACC (online or in-person)
    - Funding will be available to help off-set tuition costs for students who demonstrate financial need
  - Initial effort in establishing a WASD pipeline to address local educator shortages through institutional partnerships
- 


# Wyomissing Area School District Data Overview

Curriculum Committee Meeting  
January 9, 2023

# A Note About Assessments

- State assessments are snapshots of a student's learning
  - In core content areas, WASD has placed an emphasis on assessing student progress more regularly during the schoolyear
    - It is important to use a variety of assessments throughout the schoolyear to track students' progress and inform instruction.
      - Unit and Module Assessments
      - Universal Screenings
      - Diagnostic Assessments
  - These assessments help to:
    - Formulate small groups of students and target instruction on skills and concepts
    - Establish students' entry and exit in intervention and remediation supports
    - Monitor progress
- 

# A Note About Assessments

- State Assessments – PSSA and Keystones (ELA, Math and Science)
  - District Assessments - ELA
    - Classroom Diagnostic Tools – Full Battery and Content Area Tests
    - Fountas and Pinnell Leveling (K-4)
    - SRI – Reading Levels (5-8)
    - Core Phonics – Primary
    - Phonemic/Phonological Awareness – Primary
  - District Assessments and Targeted Assessments - Math
    - Acadience
    - Primary Numeracy – elementary/middle school
    - Multiplicative Thinking – upper elementary
    - Fractional Thinking – upper elementary/middle school
- 

# 2022-2023 WASD Assessment Summary

SCHOOL	CONTENT AREA	ASSESSMENT	TIMEFRAME	GRADE LEVEL(S)
WHEC	Literacy	Fountas and Pinnell Reading Levels	Fall, Winter, Spring	K-4
WHEC	Literacy	CORE Phonics	Fall and As Needed	Primary
WHEC	Literacy	Phonemic Awareness/Phonological Assessment	Fall, Winter, Spring	Primary
WHEC/WREC/JSHS	Literacy	Classroom Diagnostic Tools (CDTs) – Full Battery	Fall, Spring	3-8, Literature
WHEC/WREC/JSHS	Literacy	Classroom Diagnostic Tools (CDTs) – Content Area	Fall, Winter, Spring	3-8, Literature
WREC/JSHS	Literacy	SRI – Reading Levels	Fall, Winter, Spring	5-8
WHEC/WREC	Math	Acadience	Fall, Winter, Spring	K-6
WHEC/WREC	Math	Primary Numeracy, Multiplicative Thinking, Fractional Thinking	Targeted	K-6
WHEC/WREC/JSHS	Math	Classroom Diagnostic Tools (CDTs) – Full Battery	Fall, Spring	3-8, Algebra
WHEC/WREC/JSHS	Math	Classroom Diagnostic Tools – Content Area	Fall, Winter, Spring	3-8, Algebra

# Wyomissing Area School District Fast Facts – Demographic Data (Future Ready Index, 2022)

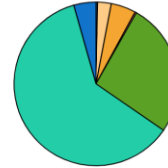
## Percent Enrollment by Student Groups

Economically Disadvantaged	35.3%
English Language Learner	3.3%
Special Education	15.7%
Foster Care	0.2%
Homeless	0.8%
Military Connected	0.1%

## Percent Enrollment by Gender

Male	49.9%
Female	50.1%

## Percent Enrollment by Race/Ethnicity



American Indian/Alaskan Native	0.3%
Asian	2.7%
Black	4.9%
Native Hawaiian or other Pacific Islander	0.3%
Hispanic	26.4%
White	61.0%
2 or More Races	4.4%

# Wyomissing Area School District 2021-2022 Attendance Data

Grade Level Span	Enrollment	Attendance Percentage
K-4	629	93.47
5-6	280	93.54
7-12	874	90.68
Districtwide	1793	92.09

# Trends in Attendance Data

School Year	Wyomissing Area JSHS	West Reading	Wyomissing Hills	Districtwide
2021-22	90.68	93.54	93.47	92.09
2020-21	94.25	94.48	96.49	95.08
2019-20	90.38	93.86	94.50	94.35



# Gifted Enrollment by School

<b>School</b>	<b>Gifted Enrollment Percentage</b>
Wyomissing Hills Elementary Center	1.9%
West Reading Elementary Center	9.6%
Wyomissing Area Junior Senior High School	6.9%

# PVAAS – PA Value Added Assessment System

- This performance measure represents the academic growth of students taking the Pennsylvania System of School Assessments (PSSA) or Keystone Exams relative to their entering achievement and the average statewide growth during the reported year.
- The PVAAS Academic Growth Score presents the school's impact on the change in academic achievement levels of groups of students from year-to-year in each of the state assessed content areas.
- The PVAAS Growth Index is converted to a 50-100-point scale for each of the following state assessed content areas for ALL students and each applicable subgroup (N > 20):
  - English Language Arts: PSSA English Language Arts and Keystone Literature
  - Science: PSSA Science and Keystone Biology
  - Math: PSSA Math and Keystone Algebra I

# WHEC PVAAS

Subject	<a href="#">← Year</a>	<a href="#">← Grade</a>	Growth Color Indicator
PSSA Math – 4-8	2022	4	Well Above
		Across Grades	Well Above
PSSA English Language Arts – 4-8	2022	4	Above
		Across Grades	Above
PSSA Science – 4,8	2022	4	Above

## Legend and Glossary

[Legend](#) [Glossary](#)

### Growth Color Indicators

- Well Above** Significant evidence that the school exceeded the growth standard.
- Above** Moderate evidence that the school exceeded the growth standard.
- Meets** Evidence that the school met the growth standard.
- Below** Moderate evidence that the school did not meet the growth standard.
- Well Below** Significant evidence that the school did not meet the growth standard.

# WREC PVAAS

Subject	<a href="#">← Year</a>	<a href="#">← Grade</a>	Growth Color Indicator
PSSA Math – 4-8	2022	5	Well Below
		6	Well Above
	Across Grades	Meets	
	PSSA English Language Arts – 4-8	2022	5
		6	Meets
		Across Grades	Meets

## Legend and Glossary

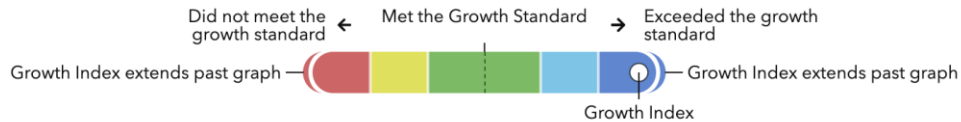
[Legend](#) [Glossary](#)

### Growth Color Indicators

- Well Above** Significant evidence that the school exceeded the growth standard.
- Above** Moderate evidence that the school exceeded the growth standard.
- Meets** Evidence that the school met the growth standard.
- Below** Moderate evidence that the school did not meet the growth standard.
- Well Below** Significant evidence that the school did not meet the growth standard.

# JSHS PVAAS

Subject	<a href="#">← Year</a>	<a href="#">← Grade</a>	Growth Color Indicator
PSSA Math - 4-8	2022	7	 Well Below 
		8	 Well Below 
		Across Grades	 Well Below 
PSSA English Language Arts - 4-8	2022	7	 Well Below 
		8	 Well Below 
		Across Grades	 Well Below 
PSSA Science - 4,8	2022	8	 Well Below 



# JSHS Keystone Assessments

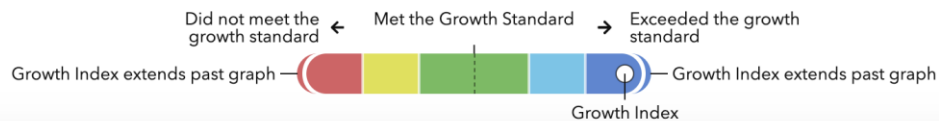
PSSA Science – 4,8	2022	8	Well Below	
Keystone Algebra I	2022	N/A	Meets	
Keystone Biology	2022	N/A	Below	
Keystone Literature	2022	N/A	Above	

## Legend and Glossary

[Legend](#) [Glossary](#)

### Growth Color Indicators

- Well Above** Significant evidence that the school exceeded the growth standard.
- Above** Moderate evidence that the school exceeded the growth standard.
- Meets** Evidence that the school met the growth standard.
- Below** Moderate evidence that the school did not meet the growth standard.
- Well Below** Significant evidence that the school did not meet the growth standard.



# Wyomissing Hills Elementary Center PSSA & Data Overview



*Grades 3 & 4*



# PSSA Overview Grade 3 ELA

## English Language Arts

	# of students	Advanced	Proficient	Basic	Below Basic
2021-2022	120 students	9% (11)	47% (56)	32% (38)	13% (15)
2020-2021	135 students	17% (23)	52% (70)	25% (34)	6% (8)
2019-2020					
2018-2019	138 students	22% (30)	53% (73)	21% (29)	4% (6)
2017-2018	132 students	21% (28)	54% (71)	21% (28)	4% (5)

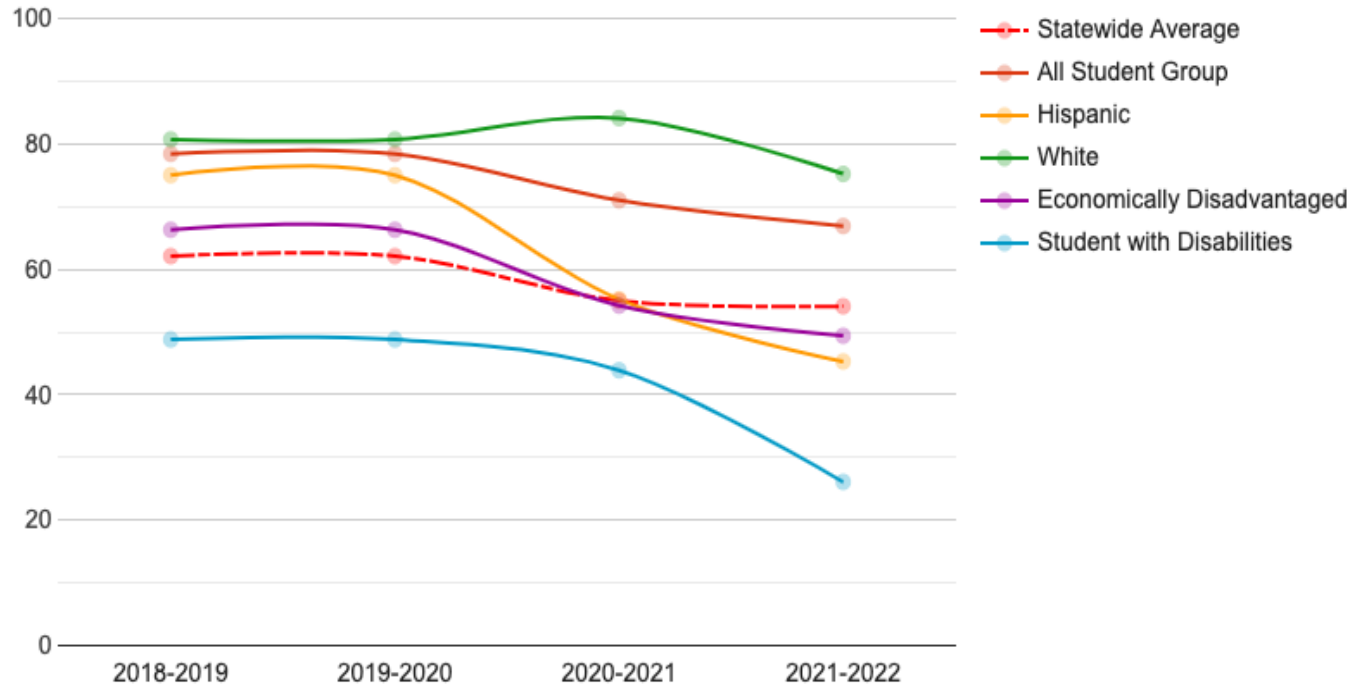


# PSSA Overview Grade 4 ELA

## English Language Arts

	# of students	Advanced	Proficient	Basic	Below Basic
<b>2021-2022</b>	130 students	38% (51)	38% (50)	16% (21)	6% (8)
<b>2020-2021</b>	124 students	37% (46)	35% (43)	23% (29)	5% (6)
<b>2019-2020</b>					
<b>2018-2019</b>	135 students	38% (51)	44% (60)	17% (23)	<1% (1)
<b>2017-2018</b>	149 students	27% (40)	44% (65)	27% (40)	3% (4)

# Future Ready Index – WHEC ELA Trends by Subgroup



# Future Ready Index – WHEC ELA Trends by Subgroup

Student Group	2018-2019	2019-2020	2020-2021	2021-2022
Statewide Average	62.1%	62.1%	55.0%	54.1%
All Student	78.4%	78.4%	71.0%	66.9%
American Indian/Alaska Native	Insufficient Sample	Insufficient Sample	Insufficient Sample	Insufficient Sample
Asian	Insufficient Sample	Insufficient Sample	Insufficient Sample	Insufficient Sample
Hawaiian Pacific Islander	Insufficient Sample	Insufficient Sample	Insufficient Sample	Insufficient Sample
Black	Insufficient Sample	Insufficient Sample	Insufficient Sample	Insufficient Sample
Hispanic	75.0%	75.0%	55.2%	45.3%
White	80.7%	80.7%	84.1%	75.2%
2 or More Races	Insufficient Sample	Insufficient Sample	Insufficient Sample	Insufficient Sample
Economically Disadvantaged	66.3%	66.3%	54.2%	49.4%
English Learner	Insufficient Sample	Insufficient Sample	Insufficient Sample	Insufficient Sample
Students with Disabilities	48.8%	48.8%	43.9%	26.1%

## English Language Arts/Literature

Key for Progress Measures



All Student Group	66.9%			
American Indian/Alaskan Native	IS			
Asian	IS			
Hawaiian/Pacific Islander	IS			
Black	IS			
Hispanic	45.3%			
White	75.2%			
2 or More Races	IS			
Economically Disadvantaged	49.4%			
English Learner	IS			
Student with Disabilities	26.1%			

# PSSA Overview Grade 3 Math

## Mathematics

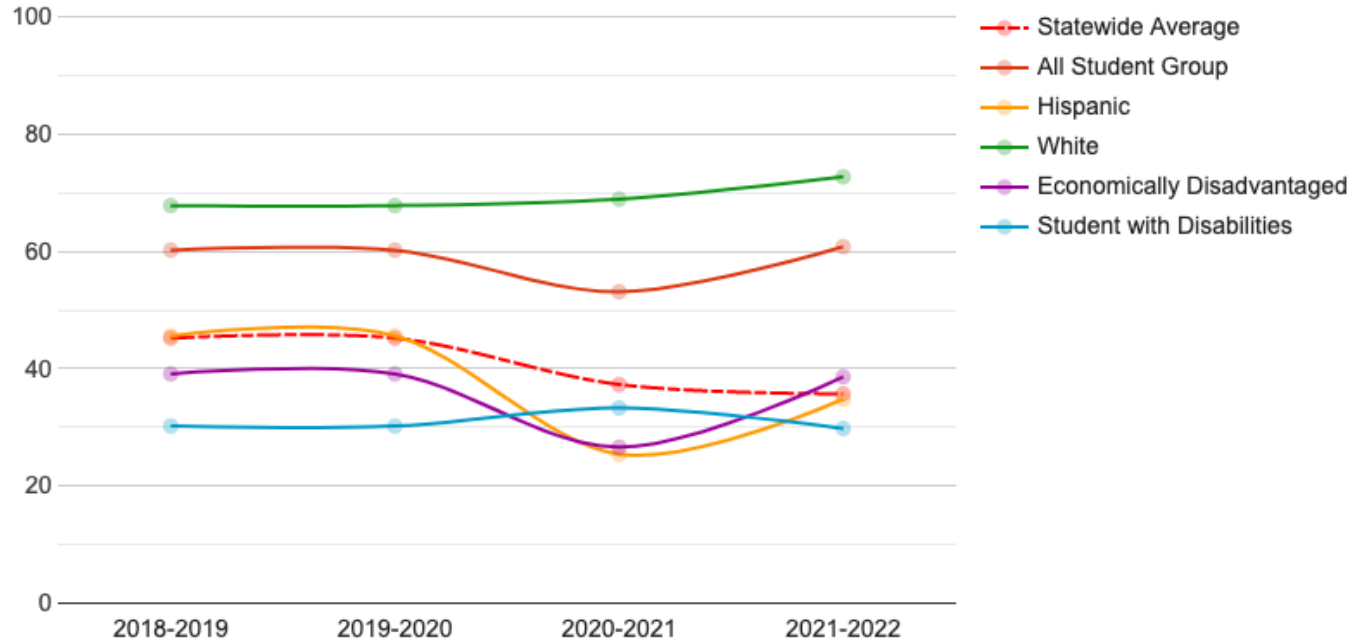
	# of students	Advanced	Proficient	Basic	Below Basic
2021-2022	121 students	21% (25)	31% (37)	23% (28)	26% (31)
2020-2021	134 students	25% (33)	33% (44)	19% (26)	23% (31)
2019-2020					
2018-2019	138 students	29% (40)	30% (41)	32% (44)	9% (13)
2017-2018	132 students	30% (39)	40% (53)	24% (32)	6% (8)

# PSSA Overview Grade 4 Math

## Mathematics

	# of students	Advanced	Proficient	Basic	Below Basic
2021-2022	134 students	38% (51)	31% (41)	21% (28)	10% (14)
2020-2021	124 students	15% (18)	31% (39)	29% (36)	25% (31)
2019-2020					
2018-2019	136 students	30% (41)	29% (40)	33% (45)	7% (10)
2017-2018	149 students	28% (42)	32% (47)	32% (48)	8% (12)

# Future Ready Index – WHEC Math Trends by Subgroup



# Future Ready Index – WHEC Math Trends by Subgroup

Student Group	2018-2019	2019-2020	2020-2021	2021-2022
Statewide Average	45.2%	45.2%	37.3%	35.7%
All Student	60.2%	60.2%	53.1%	60.8%
American Indian/Alaska Native	Insufficient Sample	Insufficient Sample	Insufficient Sample	Insufficient Sample
Asian	Insufficient Sample	Insufficient Sample	Insufficient Sample	Insufficient Sample
Hawaiian Pacific Islander	Insufficient Sample	Insufficient Sample	Insufficient Sample	Insufficient Sample
Black	Insufficient Sample	Insufficient Sample	Insufficient Sample	Insufficient Sample
Hispanic	45.6%	45.6%	25.4%	34.8%
White	67.8%	67.8%	68.9%	72.7%
2 or More Races	Insufficient Sample	Insufficient Sample	Insufficient Sample	Insufficient Sample
Economically Disadvantaged	39.1%	39.1%	26.6%	38.6%
English Learner	Insufficient Sample	Insufficient Sample	Insufficient Sample	Insufficient Sample
Students with Disabilities	30.2%	30.2%	33.3%	29.8%



## Mathematics/Algebra 1

Key for Progress Measures



All Student Group	60.8%		
American Indian/Alaskan Native	IS		
Asian	IS		
Hawaiian/Pacific Islander	IS		
Black	IS		
Hispanic	34.8%		
White	72.7%		
2 or More Races	IS		
Economically Disadvantaged	38.6%		
English Learner	IS		
Student with Disabilities	29.8%		

# PSSA Overview Grade 4 Science

## Science

	# of Students	Advanced	Proficient	Basic	Below Basic
2021-2022	132 students	54% (71)	30% (40)	13% (17)	3% (4)
2020-2021	125 students	46% (58)	34% (43)	14% (17)	6% (7)
2019-2020					
2018-2019	136 students	46% (62)	45% (61)	10% (13)	0% (0)
2017-2018	148 students	45% (66)	42% (62)	13% (19)	<1% (1)

# Act 13 School Building Scores 202–22 - Elementary

School	Building Level Score
Antietam – Mt. Penn Elem.	74.7
All Boyertown Elem	69.7- 83
Brandywine Heights	81.7
All Conrad Weiser Elem	65.6 – 75.9
Daniel Boone Intermediate	67.6
All Exeter Elem	74.9 – 76.6
All Fleetwood Elem	70.1 – 74.8
All GM Elem	65.8 - 75
All Hamburg Elem	65.2 - 67
All Kutztown Elem	76.2 – 77.9
Muhlenberg Elem (grade 3)	61.9
Oley Valley Elem	74.4
All Reading Elem	49.9 – 72.3
Schuylkill Valley Elem	67.8
All Twin Valley Elem	72.1 – 74.9
All Tulpehocken Elem	77.8 – 79.3
All Wilson Elem	64.1 – 75.8
Wyomissing Hills Elem	83.3

## Future Ready Index – Math and ELA Comparisons by Level – Elementary

School	Math % Prof./Advanced	ELA % Prof./Advanced
Schuylkill Valley ES	44.1	54.7
Mt Penn ES	21.3	41.6
Andrew Maier ES	40.9	53.4
Willow Creek ES	41.0	54.6
<b>Wyomissing Hills ES</b>	<b>60.8</b>	<b>66.9</b>

# West Reading Elementary Center PSSA & Data Overview



*Grades 5 & 6*



# PSSA Overview Grade 5 ELA

## English Language Arts

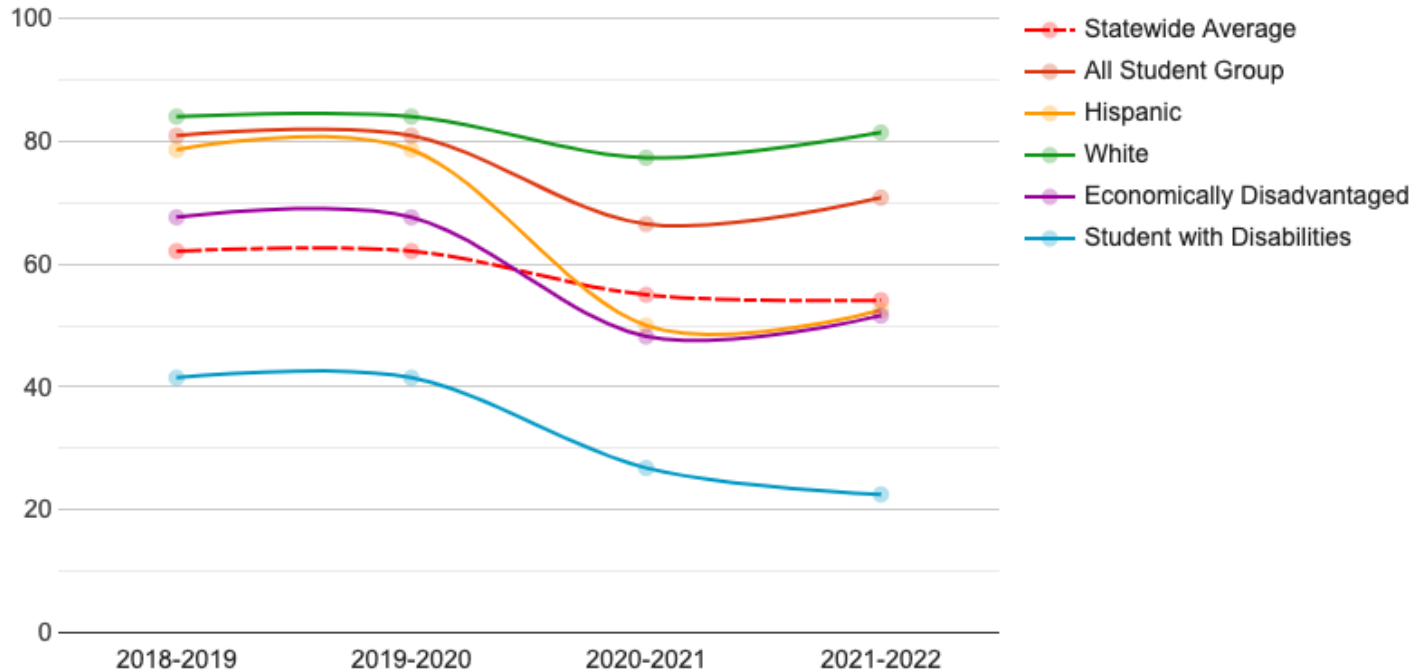
	# of students	Advanced	Proficient	Basic	Below Basic
2021-2022	137 students	26% (35)	44% (60)	19% (26)	12% (16)
2020-2021	132 students	14% (19)	48% (63)	34% (45)	4% (5)
2019-2020					
2018-2019	149 students	26% (39)	50% (74)	24% (35)	<1% (1)
2017-2018	133 students	25% (33)	48% (64)	26% (35)	<1% (1)

# PSSA Overview Grade 6 ELA

## English Language Arts

	# of students	Advanced	Proficient	Basic	Below Basic
2021-2022	145 students	25% (36)	43% (62)	30% (43)	3% (4)
2020-2021	103 students	21% (22)	50% (51)	25% (26)	3% (3)
2019-2020					
2018-2019	140 students	44% (62)	42% (59)	13% (18)	<1% (1)
2017-2018	127 students	54% (68)	27% (34)	19% (24)	<1% (1)

# Future Ready Index – WREC ELA Trends by Subgroups





# Future Ready Index – WREC ELA Trends by Subgroups

Student Group	2018-2019	2019-2020	2020-2021	2021-2022
Statewide Average	62.1%	62.1%	55.0%	54.1%
All Student	80.9%	80.9%	66.5%	70.8%
American Indian/Alaska Native	Insufficient Sample	Insufficient Sample	Insufficient Sample	Insufficient Sample
Asian	Insufficient Sample	Insufficient Sample	Insufficient Sample	Insufficient Sample
Hawaiian Pacific Islander	Insufficient Sample	Insufficient Sample	Insufficient Sample	Insufficient Sample
Black	Insufficient Sample	Insufficient Sample	Insufficient Sample	Insufficient Sample
Hispanic	78.6%	78.6%	50.0%	52.5%
White	84.0%	84.0%	77.3%	81.4%
2 or More Races	Insufficient Sample	Insufficient Sample	Insufficient Sample	Insufficient Sample
Economically Disadvantaged	67.6%	67.6%	48.2%	51.6%
English Learner	Insufficient Sample	Insufficient Sample	Insufficient Sample	Insufficient Sample
Students with Disabilities	41.5%	41.5%	26.8%	22.5%

## English Language Arts/Literature

Key for Progress Measures



All Student Group	62.0%			
American Indian/Alaskan Native	IS			
Asian	IS			
Hawaiian/Pacific Islander	IS			
Black	IS			
Hispanic	47.5%			
White	71.0%			
2 or More Races	IS			
Economically Disadvantaged	43.5%			
English Learner	IS			
Student with Disabilities	24.1%			

# PSSA Overview Grade 5 Math

## Mathematics

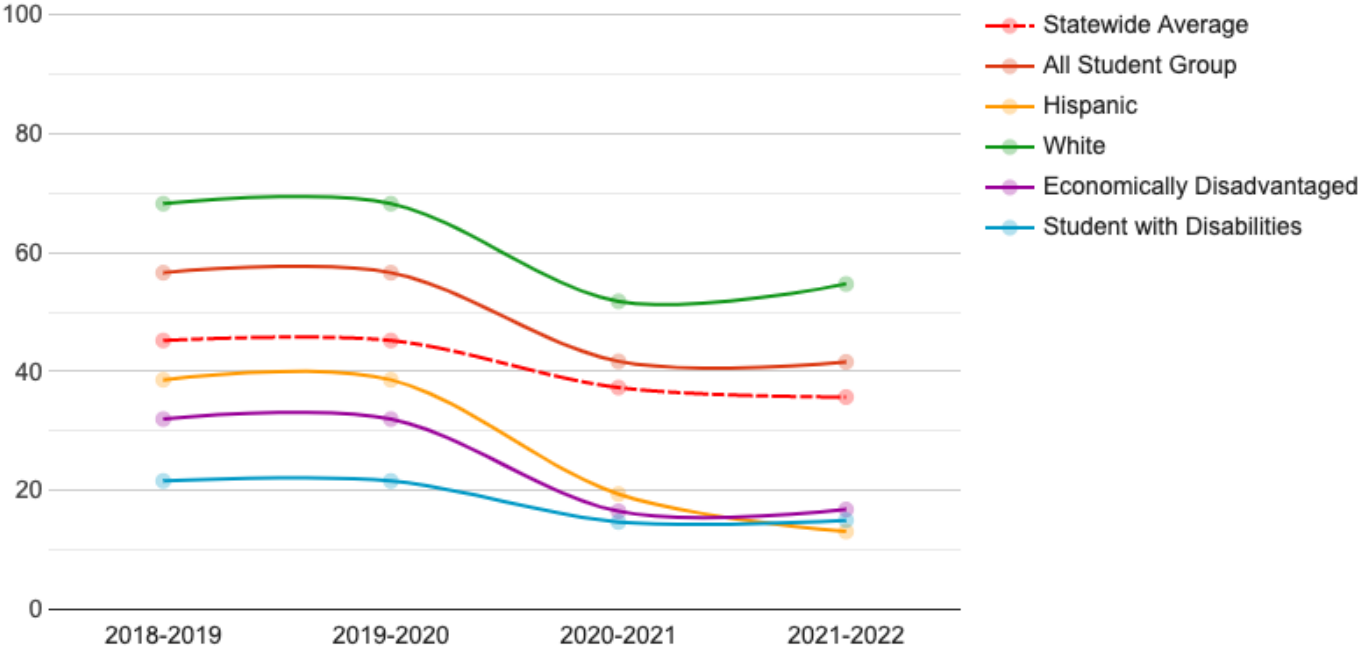
	# of students	Advanced	Proficient	Basic	Below Basic
2021-2022	137 students	10% (14)	26% (36)	39% (54)	24% (33)
2020-2021	121 students	13% (15)	31% (38)	31% (38)	25% (30)
2019-2020					
2018-2019	147 students	22% (32)	35% (52)	30% (44)	14% (20)
2017-2018	134 students	25% (33)	29% (39)	25% (34)	21% (28)

# PSSA Overview Grade 6 Math

## Mathematics

	# of students	Advanced	Proficient	Basic	Below Basic
2021-2022	145 students	24% (35)	20% (29)	34% (50)	21% (31)
2020-2021	111 students	7% (8)	30% (33)	42% (47)	21% (23)
2019-2020					
2018-2019	139 students	31% (43)	25% (35)	27% (38)	17% (23)
2017-2018	127 students	28% (36)	28% (36)	25% (32)	18% (23)

# Future Ready Index – WREC Math Trends by Subgroup



# Future Ready Index – WREC Math Trends by Subgroup

Student Group	2018-2019	2019-2020	2020-2021	2021-2022
Statewide Average	45.2%	45.2%	37.3%	35.7%
All Student	56.6%	56.6%	41.7%	41.6%
American Indian/Alaska Native	Insufficient Sample	Insufficient Sample	Insufficient Sample	Insufficient Sample
Asian	Insufficient Sample	Insufficient Sample	Insufficient Sample	Insufficient Sample
Hawaiian Pacific Islander	Insufficient Sample	Insufficient Sample	Insufficient Sample	Insufficient Sample
Black	Insufficient Sample	Insufficient Sample	Insufficient Sample	Insufficient Sample
Hispanic	38.6%	38.6%	19.4%	13.1%
White	68.2%	68.2%	51.8%	54.7%
2 or More Races	Insufficient Sample	Insufficient Sample	Insufficient Sample	Insufficient Sample
Economically Disadvantaged	32.0%	32.0%	16.5%	16.8%
English Learner	Insufficient Sample	Insufficient Sample	Insufficient Sample	Insufficient Sample
Students with Disabilities	21.6%	21.6%	14.7%	15.0%



## Mathematics/Algebra 1

Key for Progress Measures



All Student Group	41.6%		
American Indian/Alaskan Native	IS		
Asian	IS		
Hawaiian/Pacific Islander	IS		
Black	IS		
Hispanic	13.1%		
White	54.7%		
2 or More Races	IS		
Economically Disadvantaged	16.8%		
English Learner	IS		
Student with Disabilities	15.0%		

# Act 13 School Building Scores 2021–22 - Intermediate

School	Building Level Score
Exeter – Reiffon Elem	81.1
GM Intermediate	70.5
Muhlenberg – CE Cole Intermediate (grades 4-6)	62.2
<b>West Reading Elem</b>	<b>74.8</b>



# Future Ready Index – Math and ELA Comparisons by Level – Intermediate

School	Math % Prof./Advanced	ELA % Prof./Advanced
Exeter – Reiffon Elem	41.3	65.7
GM Intermediate	29.1	49.3
Muhlenberg – CE Cole Intermediate (grades 4-6)	18.5	31.3
<b>West Reading Elem</b>	<b>41.6</b>	<b>70.8</b>

# Wyomissing Area Jr./Sr. High School PSSA, Keystone & Data Overview



*Grades 7-12*



# PSSA Overview Grade 7 ELA

## English Language Arts

	# of students	Advanced	Proficient	Basic	Below Basic
2021-2022	137 students	19% (26)	41% (56)	37% (51)	3% (4)
2020-2021	127 students	12% (15)	47% (60)	39% (50)	2% (2)
2019-2020					
2018-2019	129 students	31% (40)	43% (56)	26% (33)	0% (0)
2017-2018	132 students	35% (46)	48% (63)	17% (23)	0% (0)

# PSSA Overview Grade 8 ELA

## English Language Arts

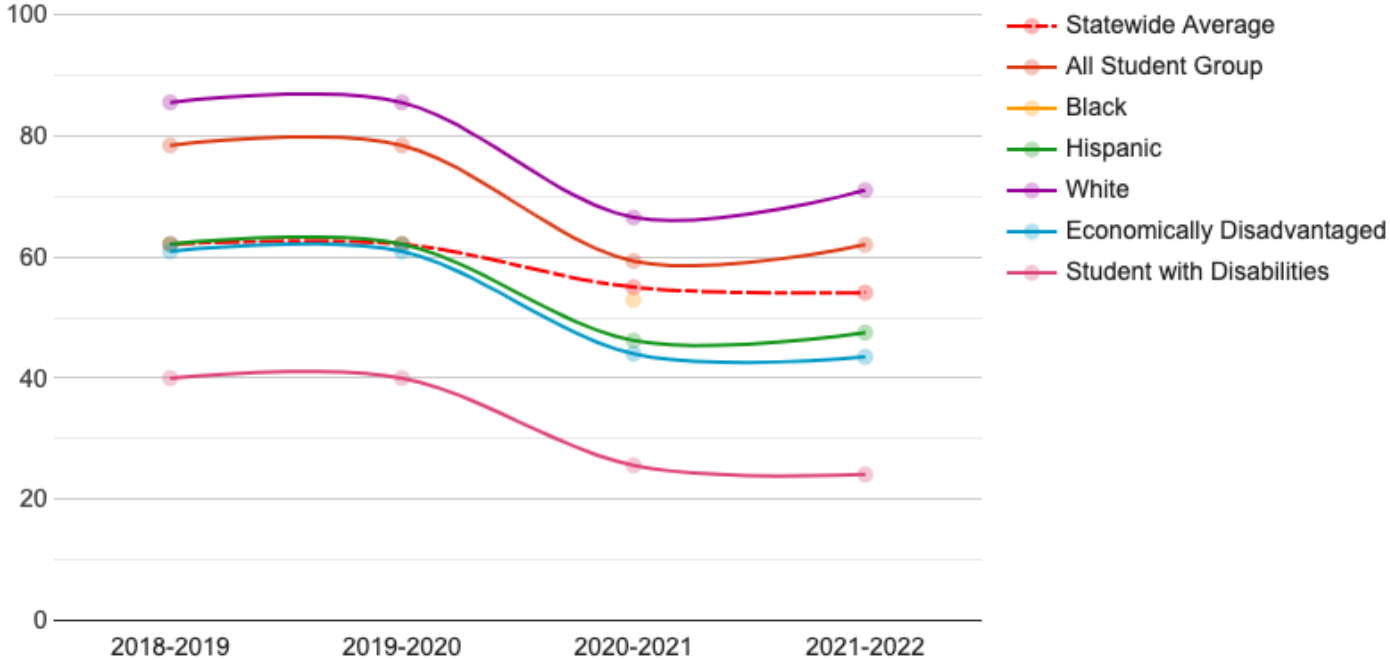
	# of students	Advanced	Proficient	Basic	Below Basic
2021-2022	130 students	14% (18)	35% (46)	38% (49)	13% (17)
2020-2021	108 students	14% (15)	46% (50)	32% (35)	7% (8)
2019-2020					
2018-2019	135 students	37% (50)	41% (56)	18% (24)	4% (5)
2017-2018	151 students	20% (30)	52% (78)	23% (34)	6% (9)

# Keystone Exam Overview Literature

## English Literature

	# of students	Advanced	Proficient	Basic	Below Basic
Spring 2022	130 students	22% (28)	48% (62)	25% (32)	6% (8)
Winter 2021	7 students	0% (0)	43% (3)	29% (2)	29% (2)
Spring 2021	131 students	18% (23)	56% (73)	19% (25)	7% (10)
Winter 2020	0 students	0% (0)	0% (0)	0% (0)	0% (0)
Winter 2019	42 students	2% (1)	26% (11)	45% (19)	26% (11)
Spring 2019	169 students	17% (29)	54% (91)	20% (33)	9% (16)

# Future Ready Index – JSHS ELA Trends by Subgroup



# Future Ready Index – JSHS ELA Trends by Subgroup

Student Group	2018-2019	2019-2020	2020-2021	2021-2022
Statewide Average	62.1%	62.1%	55.0%	54.1%
All Student	78.4%	78.4%	59.3%	62.0%
American Indian/Alaska Native	Insufficient Sample	Insufficient Sample	Insufficient Sample	Insufficient Sample
Asian	Insufficient Sample	Insufficient Sample	Insufficient Sample	Insufficient Sample
Hawaiian Pacific Islander	Insufficient Sample	Insufficient Sample	Insufficient Sample	Insufficient Sample
Black	Insufficient Sample	Insufficient Sample	52.9%	Insufficient Sample
Hispanic	62.1%	62.1%	46.2%	47.5%
White	85.5%	85.5%	66.5%	71.0%
2 or More Races	Insufficient Sample	Insufficient Sample	Insufficient Sample	Insufficient Sample
Economically Disadvantaged	60.9%	60.9%	44.0%	43.5%
English Learner	Insufficient Sample	Insufficient Sample	Insufficient Sample	Insufficient Sample
Students with Disabilities	40.0%	40.0%	25.6%	24.1%

## English Language Arts/Literature

Key for Progress Measures



All Student Group	62.0%		
American Indian/Alaskan Native	IS		
Asian	IS		
Hawaiian/Pacific Islander	IS		
Black	IS		
Hispanic	47.5%		
White	71.0%		
2 or More Races	IS		
Economically Disadvantaged	43.5%		
English Learner	IS		
Student with Disabilities	24.1%		



# PSSA Overview Grade 7 Math

## Mathematics

	# of students	Advanced	Proficient	Basic	Below Basic
2021-2022	137 students	8% (11)	20% (28)	29% (40)	42% (58)
2020-2021	128 students	9% (11)	13% (16)	40% (51)	39% (50)
2019-2020					
2018-2019	128 students	27% (34)	26% (33)	21% (27)	27% (34)
2017-2018	132 students	30% (41)	33% (43)	13% (17)	23% (31)

# PSSA Overview Grade 8 Math

## Mathematics

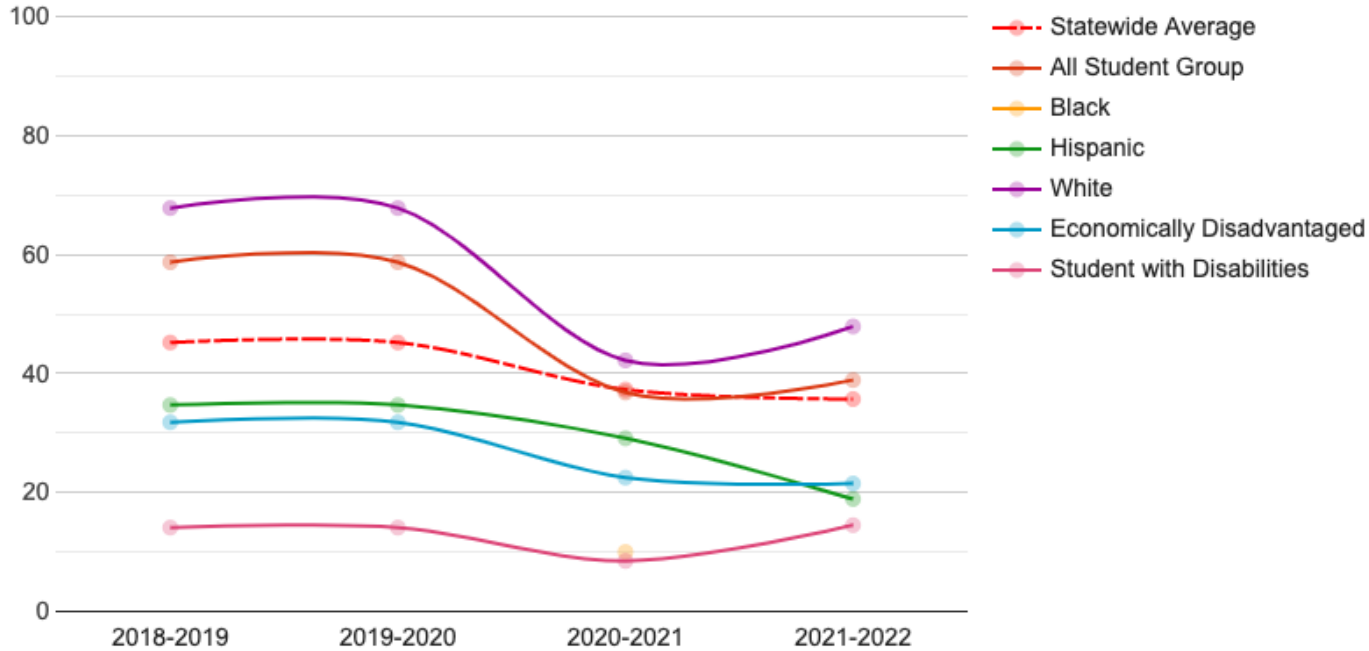
	# of students	Advanced	Proficient	Basic	Below Basic
2021-2022	130 students	5% (6)	16% (21)	27% (35)	52% (68)
2020-2021	109 students	6% (7)	14% (15)	28% (31)	51% (56)
2019-2020					
2018-2019	135 students	23% (31)	24% (32)	26% (35)	27% (37)
2017-2018	153 students	18% (28)	12% (19)	25% (39)	44% (67)

# Keystone Exam Overview Algebra

## Algebra

	# of students	Advanced	Proficient	Basic	Below Basic
Spring 2022	83 students	<1% (1)	20% (17)	59% (49)	19% (16)
Winter 2021	127 students	20% (25)	25% (32)	43% (55)	12% (15)
Spring 2021	1 student	0% (0)	0% (0)	0% (0)	<1% (1)
Winter 2020	19 students	0% (0)	26% (5)	74% (14)	0% (0)
Winter 2019	149 students	36% (54)	26% (39)	33% (49)	5% (7)
Spring 2019	45 students	0% (0)	11% (5)	49% (22)	40% (18)

# Future Ready Index – JSHS Math Trends by Subgroup



# Future Ready Index – JSHS Math Trends by Subgroup

Student Group	2018-2019	2019-2020	2020-2021	2021-2022
Statewide Average	45.2%	45.2%	37.3%	35.7%
All Student	58.7%	58.7%	36.8%	38.9%
American Indian/Alaska Native	Insufficient Sample	Insufficient Sample	Insufficient Sample	Insufficient Sample
Asian	Insufficient Sample	Insufficient Sample	Insufficient Sample	Insufficient Sample
Hawaiian Pacific Islander	Insufficient Sample	Insufficient Sample	Insufficient Sample	Insufficient Sample
Black	Insufficient Sample	Insufficient Sample	10.0%	Insufficient Sample
Hispanic	34.7%	34.7%	29.1%	18.9%
White	67.8%	67.8%	42.2%	47.9%
2 or More Races	Insufficient Sample	Insufficient Sample	Insufficient Sample	Insufficient Sample
Economically Disadvantaged	31.8%	31.8%	22.5%	21.5%
English Learner	Insufficient Sample	Insufficient Sample	Insufficient Sample	Insufficient Sample
Students with Disabilities	14.1%	14.1%	8.5%	14.5%

# Mathematics/Algebra 1

## Key for Progress Measures

All Student Group	38.9%		
American Indian/Alaskan Native	IS		
Asian	IS		
Hawaiian/Pacific Islander	IS		
Black	IS		
Hispanic	18.9%		
White	47.9%		
2 or More Races	IS		
Economically Disadvantaged	21.5%		
English Learner	IS		
Student with Disabilities	14.5%		

# PSSA Overview Grade 8 Science

## Science

	# of students	Advanced	Proficient	Basic	Below Basic
2021-2022	130 students	8% (11)	32% (41)	30% (39)	30% (39)
2020-2021	*(no scores)				
2019-2020					
2018-2019	135 students	35% (47)	40% (54)	15% (20)	10% (14)
2017-2018	153 students	23% (35)	36% (55)	22% (34)	19% (29)

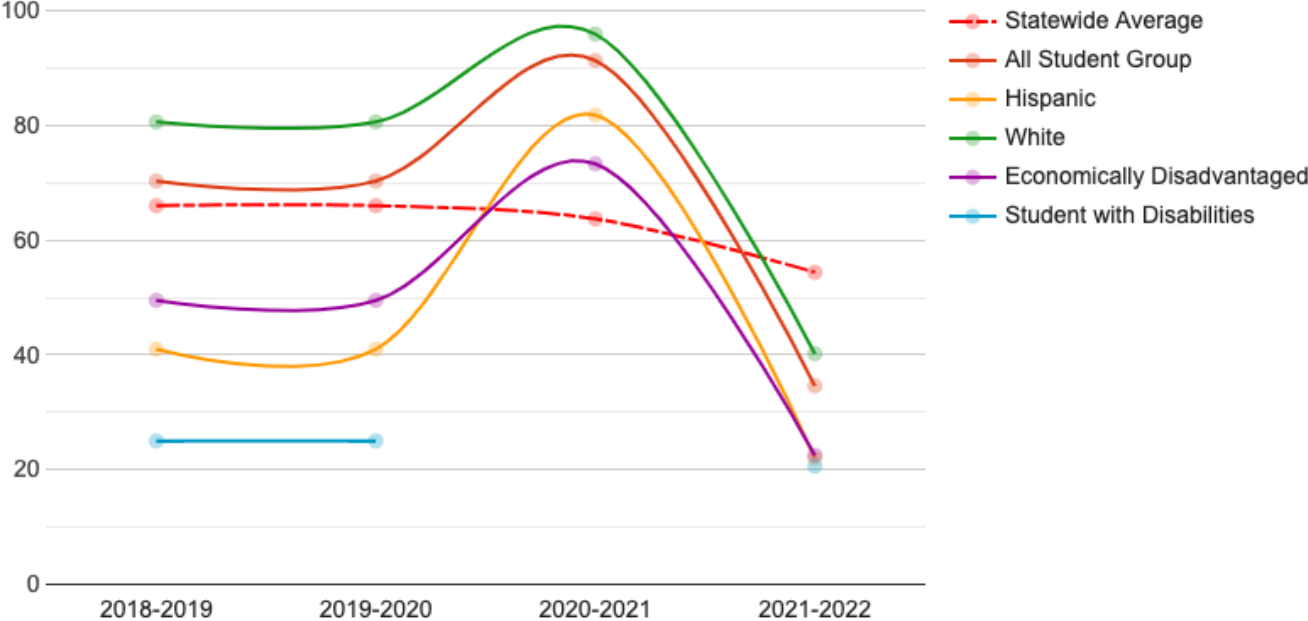
# Keystone Exam Overview Biology

## Biology

	# of students	Advanced	Proficient	Basic	Below Basic
Spring 2022	137 students	25% (34)	30% (41)	28% (38)	18% (24)
Winter 2021	1 student	0% (0)	0% (0)	0% (0)	<1% (1)
Spring 2021	119 students	29% (34)	26% (31)	29% (35)	16% (19)
Winter 2020	2 students	0% (0)	0% (0)	50% (1)	50% (1)
Winter 2019	46 students	0% (0)	9% (4)	52% (24)	39% (18)
Spring 2019	151 students	31% (46)	32% (49)	23% (35)	14% (21)



# Future Ready Index – JSHS Science Trends by Subgroup



# Future Ready Index – JSHS Science Trends by Subgroup

Student Group	2018-2019	2019-2020	2020-2021	2021-2022
Statewide Average	66.0%	66.0%	63.7%	54.4%
All Student	70.3%	70.3%	91.3%	34.6%
American Indian/Alaska Native	Insufficient Sample	Insufficient Sample	Insufficient Sample	Insufficient Sample
Asian	Insufficient Sample	Insufficient Sample	Insufficient Sample	Insufficient Sample
Hawaiian Pacific Islander	Insufficient Sample	Insufficient Sample	Insufficient Sample	Insufficient Sample
Black	Insufficient Sample	Insufficient Sample	Insufficient Sample	Insufficient Sample
Hispanic	41.0%	41.0%	81.8%	22.0%
White	80.6%	80.6%	95.9%	40.2%
2 or More Races	Insufficient Sample	Insufficient Sample	Insufficient Sample	Insufficient Sample
Economically Disadvantaged	49.5%	49.5%	73.3%	22.5%
English Learner	Insufficient Sample	Insufficient Sample	Insufficient Sample	Insufficient Sample
Students with Disabilities	25.0%	25.0%	Insufficient Testers	20.6%

# Act 13 School Building Scores 2021–22 – Middle Level

<b>School</b>	<b>Building Level Score</b>
All Boyertown Middle Schools	67.5 – 77.5
Brandywine Heights Intermediate/MS	64.4
Conrad Weiser MS	70.5
Daniel Boone MS	75.7
Exeter JH	66
Fleetwood MS	67.4
GM MS	58.7
Hamburg MS	64.5
Kutztown MS	68.7
Muhlenberg MS	56.3
Oley Valley MS	82.4
All Reading MS	58.9 – 69.3
Schuylkill Valley MS	73.5
Twin Valley MS	62.8
Wilson MS	58.2 – 59.2

# Future Ready Index - Math and ELA Achievement Comparisons Middle Levels

School	Math % Prof./Advanced	ELA % Prof./Advanced
Conrad Weiser MS	25.2	48.1
Daniel Boone MS	31.1	61.5
Exeter JH	28.9	62.8
Fleetwood MS	26.4	51.0
Hamburg MS	18.9	42.9
Kutztown MS	26.7	63.6
Muhlenberg MS	14.5	29.1
Oley Valley MS	43.0	65.5
Schuylkill Valley MS	29.9	59.6
Twin Valley MS	40.9	57.9
Wilson Southern MS	20.8	52.8
Wilson West MS	23.2	53.9
Wyomissing Area – Grade 7	28	60
Wyomissing Area – Grade 8	21	49

# Act 13 School Building Scores 2021–22 – High School

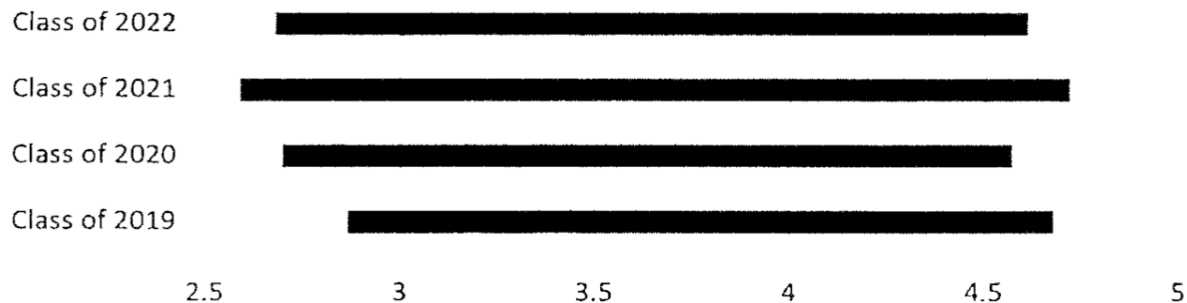
School	Building Level Score
<b>Antietam MS/HS</b>	<b>60.9</b>
Boyertown HS	67.6
Brandywine Heights HS	77.1
Conrad Weiser HS	81.6
Daniel Boone HS	75.8
Exeter HS	63.3
Fleetwood HS	89
Governor Mifflin HS	63.7
Hamburg HS	71.6
Kutztown HS	91.2
Muhlenberg HS	67.2
Oley Valley HS	79.5
Reading HS	57.9
Schuylkill Valley HS	83
Twin Valley HS	71.9
<b>Tulpehocken JSHS</b>	<b>74.4</b>
Wilson HS	83.2
<b>Wyomissing Area JSHS</b>	<b>63.3</b>
<b>Octorara JSHS</b>	<b>65.2</b>
<b>Minersville JSHS</b>	<b>56.1</b>
<b>North Schuylkill JSHS</b>	<b>68.7</b>
<b>Hanover JSHS</b>	<b>52.9</b>
<b>Jenkintown MS/HS</b>	<b>71</b>
<b>Panther Valley JSHS</b>	<b>58</b>

# Future Ready Index – Math and ELA Comparisons by Level – Junior/Senior High School

School	Math % Prof./Advanced	ELA % Prof./Advanced
Tulpehocken JSHS	36.7	58.3
Antietam JSHS	16.3	44.6
Hanover Area JSHS	8.8	29.2
Jenkintown JSHS	39.5	67.3
North Schuylkill JSHS	24.2	50.5
Minersville JSHS	12.1	49.4
<b>Wyomissing Area JSHS</b>	<b>38.9</b>	<b>62</b>

# Wyomissing Area Junior Senior High School Grade Point Averages

## Grade Point Averages (middle 50th percentile)



**CLASS OF 2019: 2.86—4.68 | CLASS OF 2020: 2.67 - 4.57 | CLASS OF 2021: 2.59 - 4.72 | CLASS OF 2022: 2.67 - 4.67**

# SAT Statistics – Class of 2022

## SAT AVERAGES — Class of 2022

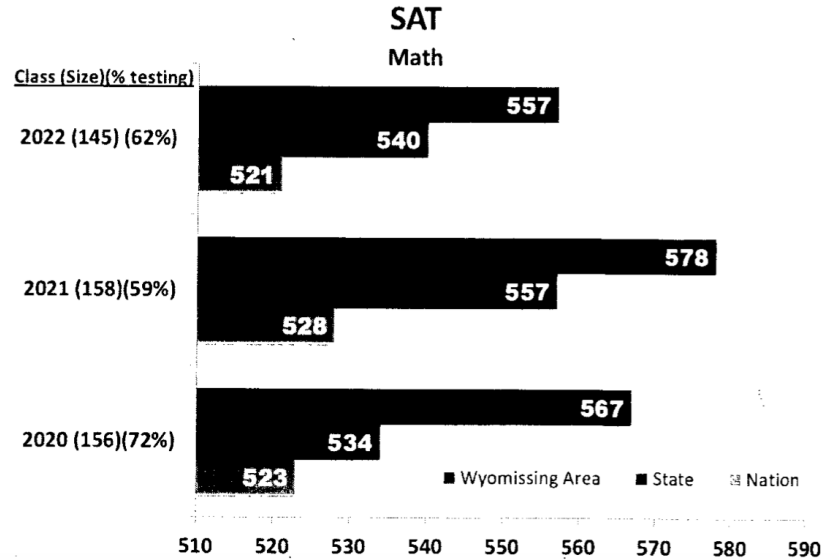
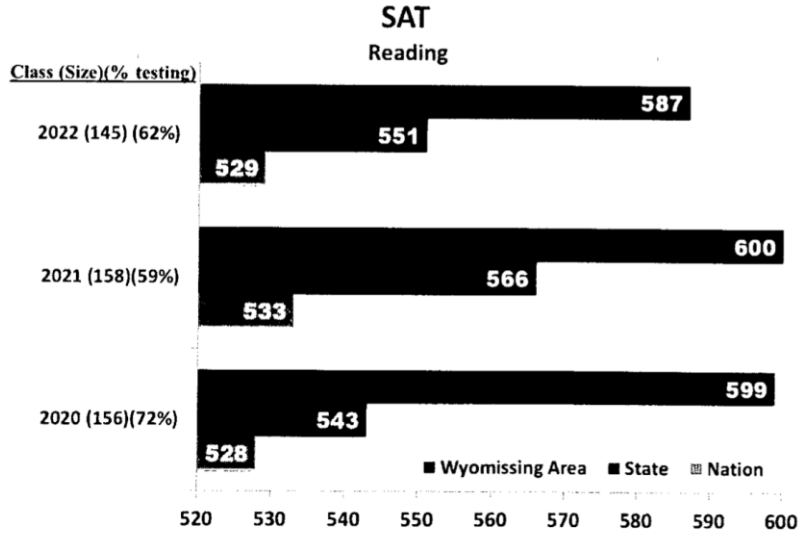
<b>*62 % All seniors taking exam</b>	<b>WYOMISSING AREA</b>	<b>STATE</b>	<b>NATION</b>	<b>NATIONAL MERIT</b>
<b>Reading/Writing</b>	<b>587</b>	<b>551</b>	<b>529</b>	<b>Finalists = 4</b>
<b>Math</b>	<b>557</b>	<b>540</b>	<b>521</b>	<b>Commended = 1</b>

## DISTRIBUTION OF SAT SCORES

<b>CRITICAL READING</b>	<b>SCORE RANGE</b>	<b>MATH</b>
7	750-800	7
10	700-749	5
11	650-699	6
10	600-649	9
21	550-599	18
14	500-549	19
11	450-499	14
5	400-449	8
1	350-399	3
0	300-349	1
0	250-299	0
0	200-249	0



# SAT Statistics – Class of 2022



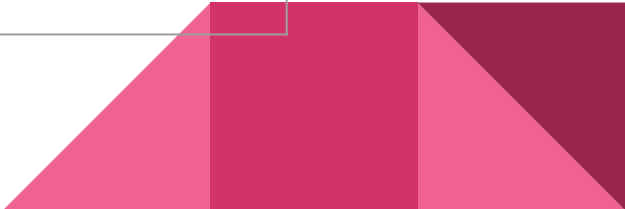
# ACT Statistics – Class of 2022

## ACT AVERAGES—Class of 2022

<b>*8% All Seniors Taking Exam</b>			
<b>SUBJECT</b>	<b>WYOMISSING AREA</b>	<b>STATE</b>	<b>NATION</b>
English	30.5	24.3	19.0
Math	27.0	23.7	19.3
Reading	28.6	25.2	20.4
Science	26.5	24.0	19.9
Composite	26.6	24.4	19.8

# Class of 2022 Post-Secondary Plans

Post-Secondary Plans	Number of Students	Percentage of Class
4-Year Colleges	109	75%
2-Year Colleges	14	10%
Career and Technical	4	3%
Post-Graduate Year	1	<1%
Employment	17	12%
Total	145	



# Current AP Enrollment - 2022-2023

- 23 AP Courses
- Grades 10 – 12:
  - 183 Students enrolled in courses
  - 478 Exams scheduled for the spring
- Data for 2021- 2022 forthcoming...



# Participation in Authentic Experiences– 2022-2023

- Internships
  - 32 students in a variety of internal and external placements
- BCTC
  - 63 students
- BCTC Diversified Occupations
  - 6 students
    - Attend BCTC and work on the job site
- BCTC Medical Health Professions
  - 2 students
    - Attend BCTC and PSU Berks
- ROTC Partnership with Wilson SD
  - 4 Students enrolled in Levels 1 and 2




# Wyomissing Area 2021-2022 JHSH Athletics Participation

- 30 Varsity Sports

High School Boys	High School Girls	Junior High Boys	Junior High Girls
274	177	147	154

# Additional Academic Data – Next Steps

- January 2023 – WIDA Administration
    - Research-based assessment to measure language proficiency
    - Administered to our ELLs
    - Results reported to the state
  - Winter district assessment data collection results will be shared to allow comparison analysis from baseline fall collections
    - CDTs
    - Reading Levels (SRI and Fountas and Pinnell)
  - Progress monitoring of targeted interventions in literacy and math
- 

# Additional Data – Next Steps

- Gather Financial Data
- Compile Finalized Academic Data
- Collect Additional Extracurricular Participation Data
  - Music
  - Clubs
- Include Special Education Data





# Next Steps – Math Academic Focus

- Timeline

- Formulate math action plan – January/February 2023
- Present math action plan to Board of Directors – February 2023
- Collect mid-year assessment data and report progress– March 2023

